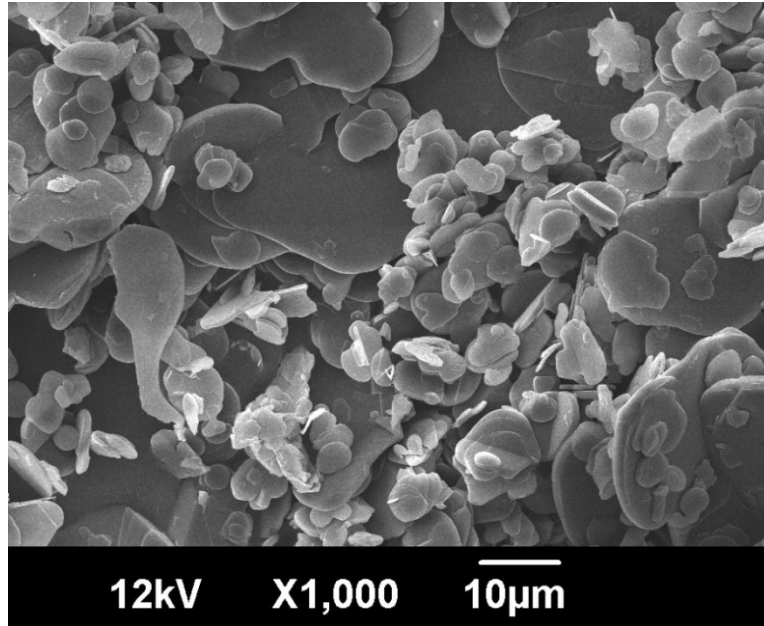


Data Sheet

Boron Nitride Powder CARESS* BN15



Typical Analysis*:

BNmin.	99%
Oxygen tot.	0,6%
B₂O₃ sol.	0,03%
C	0,015%
Ca	0,015%
Si	0,025%
Al	0,003%
Fe	0,002%
As	0,0002%
Pb	0,0002%
Hg	0,0005%
BET	1,5m²/g
Tap Density	0,5g/cm³
Mean Particle Size	15µm
D97	55µm

*Values represent typical data and will vary within ranges established for a particular grade.